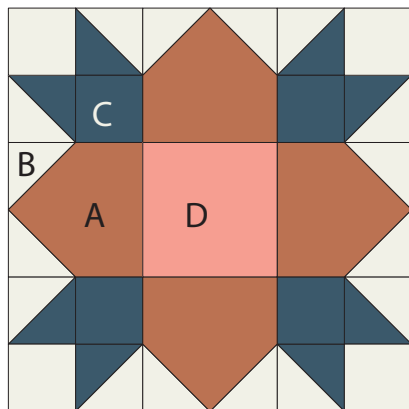


## Weathervane



### CUT

#### •Fabric A

» Four 4-<sup>3</sup>/<sub>4</sub>" squares

#### •Fabric B

» Four 3" squares

» Eight 2-<sup>3</sup>/<sub>4</sub>" squares

» Four 2-<sup>1</sup>/<sub>2</sub>" squares

#### •Fabric C

» Four 3" squares

» Four 2-<sup>1</sup>/<sub>2</sub>" squares

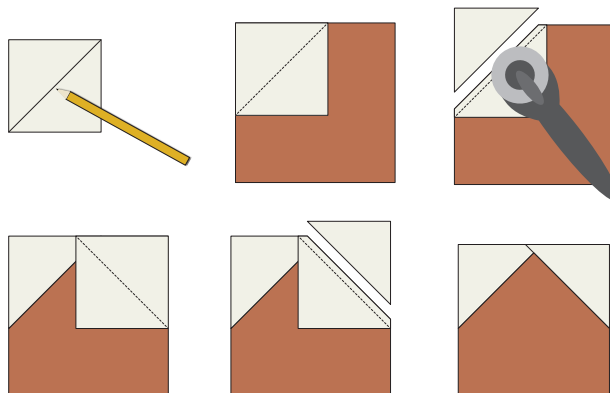
#### •Fabric D

» One 4-<sup>1</sup>/<sub>2</sub>" squares

Read through all instructions before beginning. Remove selvages. Cut pieces exactly as listed in instructions. Sew pieces right sides together and use an accurate <sup>1</sup>/<sub>4</sub>" seam allowance.

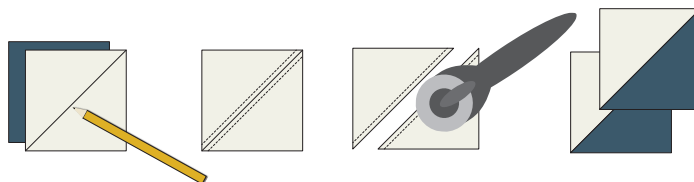
### Quick-Corner Units

1. Draw a diagonal line on the wrong side of each 2-<sup>3</sup>/<sub>4</sub>" fabric B square. Noting orientation of the drawn line, place a marked square right sides together on a corner of a 4-<sup>3</sup>/<sub>4</sub>" fabric A square. Sew on the line. Trim <sup>1</sup>/<sub>4</sub>" past the stitch line. Press corner open. Noting orientation of drawn line, repeat on the other corner as shown to make a Quick-Corner unit. Trim unit to 4-<sup>1</sup>/<sub>2</sub>" square, leaving a <sup>1</sup>/<sub>4</sub>" seam allowance on each side to make one Quick-Corner unit. Make a total of four Quick-Corner units.



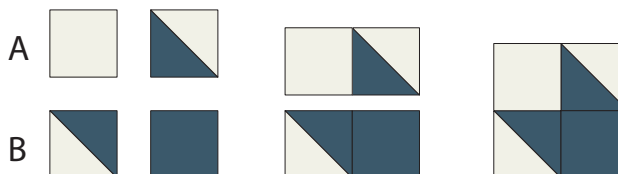
### Half-Square Triangle Units

1. Draw a diagonal line on the wrong side of each 3" fabric B square. Place a marked square right sides together with a same-size fabric C square. Sew a <sup>1</sup>/<sub>4</sub>" seam on each side of the drawn line. Cut apart on the line to make two Half-Square Triangle (HST) units. Trim units to 2-<sup>1</sup>/<sub>2</sub>" square. Make a total of eight HST units.



### BLOCK ASSEMBLY

1. Noting placement, sew one 2-<sup>1</sup>/<sub>2</sub>" fabric B square, one 2-<sup>1</sup>/<sub>2</sub>" fabric C square, and two HST units into 2 rows of 2 squares/units each. Join rows to make a section that measures 4-<sup>1</sup>/<sub>2</sub>" square. Make a total of four sections.

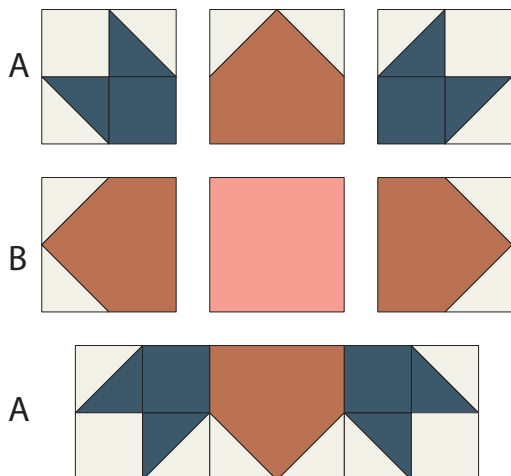


## Weathervane Page 2

2. Referring to the Block Assembly Diagram and noting placement and orientation, sew one Quick-Corner unit between two sections to make an A row. Make a total of two A rows.

3. Sew the 4-½" fabric D square between two Quick-Corner units to make a B row.

4. Join the rows to make a block. Trim to 12-½" square.



Block Assembly Diagram

Notes

### COPYRIGHT

For personal use only. Reproduction or distribution of any part of this pattern in any way whatsoever without written permission is strictly prohibited. If this design is used in a quilt for display, please credit, "Sharon Holland" for the design. All rights reserved.

©2018 Sharon Holland. For pattern support:

contact@sharonhollanddesigns.com